

ALIGNMENT PROCEDURE
SKY BUDDY
Model S-19



the hallicrafters inc.
2611 INDIANA AVENUE
CHICAGO

ALIGNMENT PROCEDURE FOR SKY-BUDDY MODEL S-19

INTERMEDIATE FREQUENCY ALIGNMENT

HAVE THE CONTROLS SET AS FOLLOWS:

A.V.C. - B.F.O. CONTROL "OFF" OR VERTICAL POSITION
BAND SWITCH ON #1 BAND
ADJUST A.F. GAIN FOR MAXIMUM VOLUME
SET MAIN DIAL AT 1,800 KC OR MINIMUM CAPACITY POSITION

REMOVE 6K8 GRID CAP
CONNECT SIGNAL GENERATOR, THROUGH A .1 MFD CONDENSER TO THE GRID OF THE 6K8 MIXER OSCILLATOR TUBE.
CONNECT THE GROUND OF THE GENERATOR TO THE CHASSIS OF THE RECEIVER.

AN INTERMEDIATE FREQUENCY OF 455 KC IS USED. THE RADIO MANUFACTURERS ASSOCIATION HAS ADOPTED 455 KC AS A STANDARD INTERMEDIATE FREQUENCY FOR ALL-WAVE SUPERHETERODYNE RECEIVERS.

AFTER THE ABOVE ADJUSTMENTS HAVE BEEN MADE SET THE SIGNAL GENERATOR FOR 455 KC SIGNAL OUTPUT.
NOW ADJUST THE CONDENSERS ON T1 AND T2 FOR EXACT RESONANCE WHICH WILL BE INDICATED BY MAXIMUM SIGNAL OUTPUT.
IF YOU PREFER AN OUTPUT METER AS AN INDICATOR, IT SHOULD BE CONNECTED TO THE VOICE COIL LEADS OF THE SPEAKER, OR TO THE PLATE OF THE 6K6 OUTPUT TUBE THROUGH A SUITABLE COUPLING CONDENSER.

RADIO FREQUENCY ALIGNMENT

REPLACE THE .1 MFD CONDENSER IN SERIES WITH THE GENERATOR LEAD WITH A 400 OHM RESISTOR. CONNECT THE GENERATOR TO THE A1 TERMINAL ON THE STRIP MOUNTED ON THE REAR OF THE CHASSIS. LEAVE THE JUMPER BETWEEN A2 AND G CONNECTED. ALL PAD ADJUSTMENTS ARE FOR THE LOW-FREQUENCY ENDS OF THE BANDS AND ARE LOCATED ON THE TOP OF THE CHASSIS. ALL TRIMMER ADJUSTMENTS ARE FOR THE HIGH-FREQUENCY ENDS OF THE BANDS AND ARE MADE THROUGH THE BOTTOM OF THE CABINET. REMOVE THE GUARANTEE SEAL ON THE BOTTOM OF THE CABINET BY PLACING A KNIFE UNDER THE SMALL SNAP FASTENERS WHICH HOLD IT IN PLACE.

BAND No. 1

PLACE BAND SWITCH ON #1, OR BROADCAST, BAND. SET GENERATOR TO 1,400 KC AND ADJUST THE MAIN DIAL TO THAT FREQUENCY. ADJUST OSCILLATOR TRIMMER C_A, FOR MAXIMUM SIGNAL. NOW SET GENERATOR AND RECEIVER TO 600 KC. ADJUST PAD, C₂₆ FOR MAXIMUM SIGNAL.

BAND No. 2

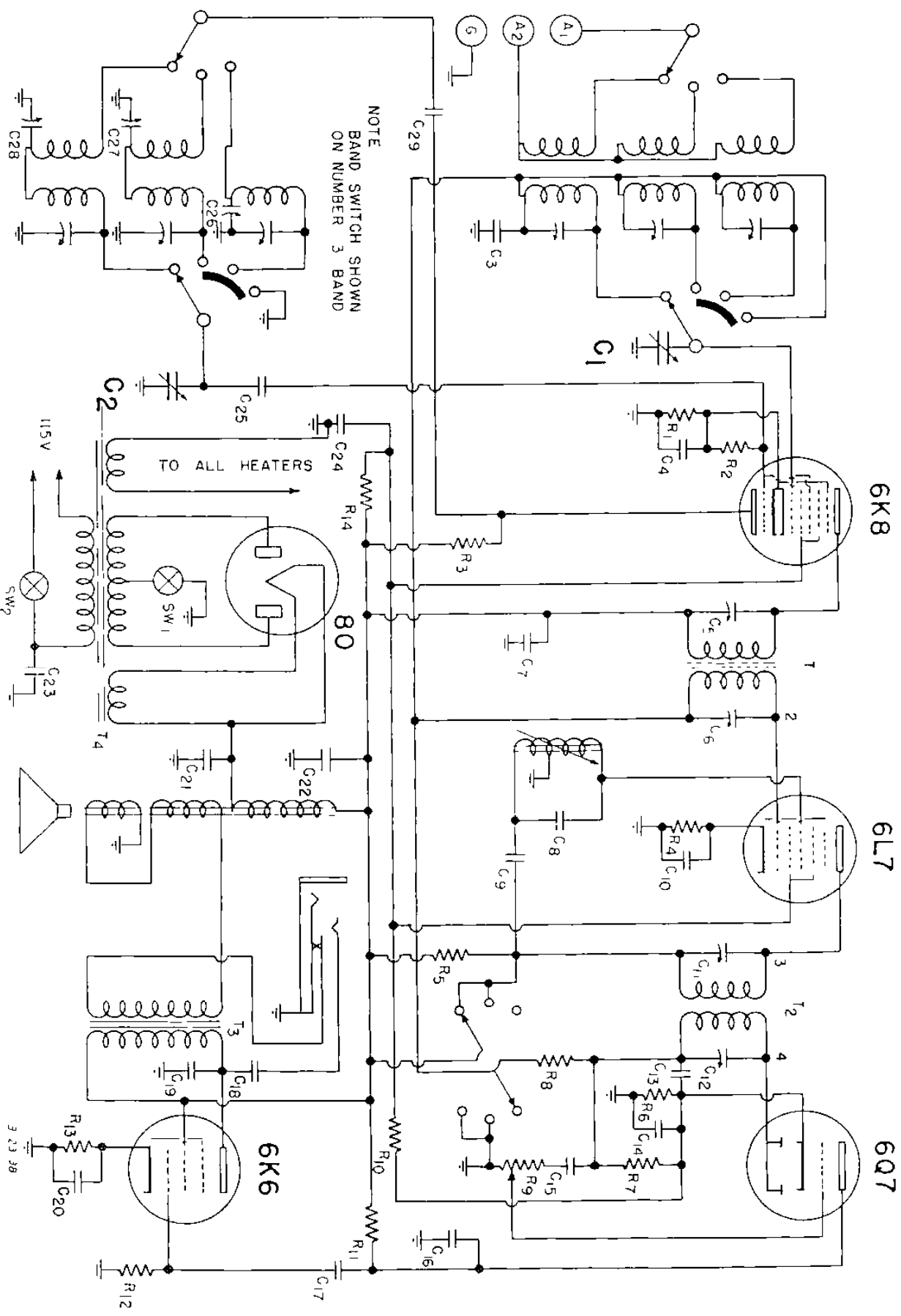
TURN BAND SWITCH TO #2 BAND. SET GENERATOR AND RECEIVER TO 4 MC AND ADJUST C_E FOR MAXIMUM SIGNAL. TUNE GENERATOR AND RECEIVER TO 1.8 MC AND RESONATE PAD C₂₇ FOR MAXIMUM SIGNAL.

BAND No. 3

PLACE BAND SWITCH ON #3 BAND. ADJUST GENERATOR AND RECEIVER TO 14 MC AND TRIM WITH C_C. SET GENERATOR AND RECEIVER TO 7 MC AND ADJUST PAD C₂₈ FOR MAXIMUM SIGNAL.

WHILE MAKING THESE ADJUSTMENTS IT IS ADVISABLE TO "ROCK" THE MAIN CONDENSER ACROSS THE PARTICULAR FREQUENCY YOU ARE TRIMMING OR PADDING. ONCE THE EXACT POINT OF MAXIMUM OUTPUT IS REACHED FURTHER ADJUSTMENT FOR THE FREQUENCY USED IS UNNECESSARY.

SCHEMATIC DIAGRAM - SKY BUDDY - MODEL S-19

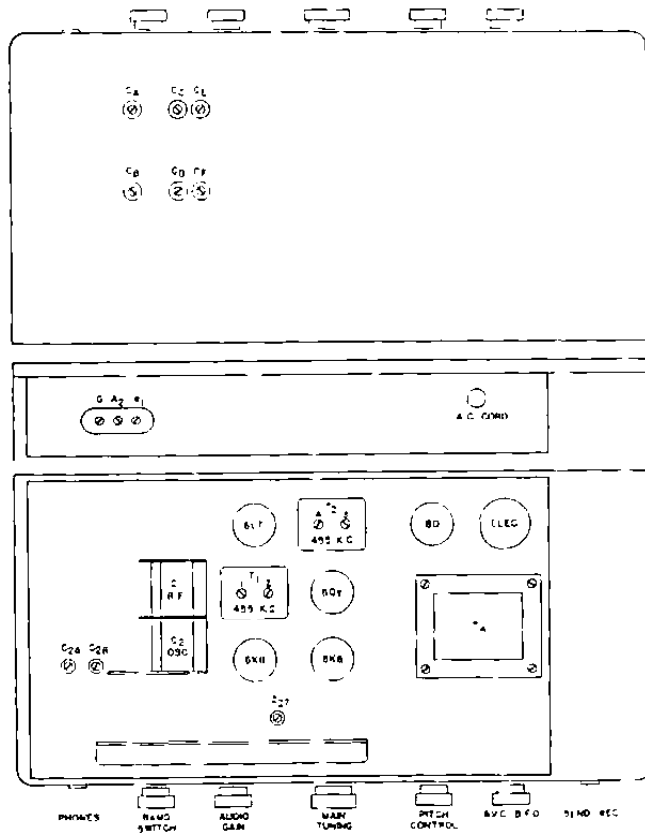


SKY-HOOD MODEL 3-19 PARTS LIST

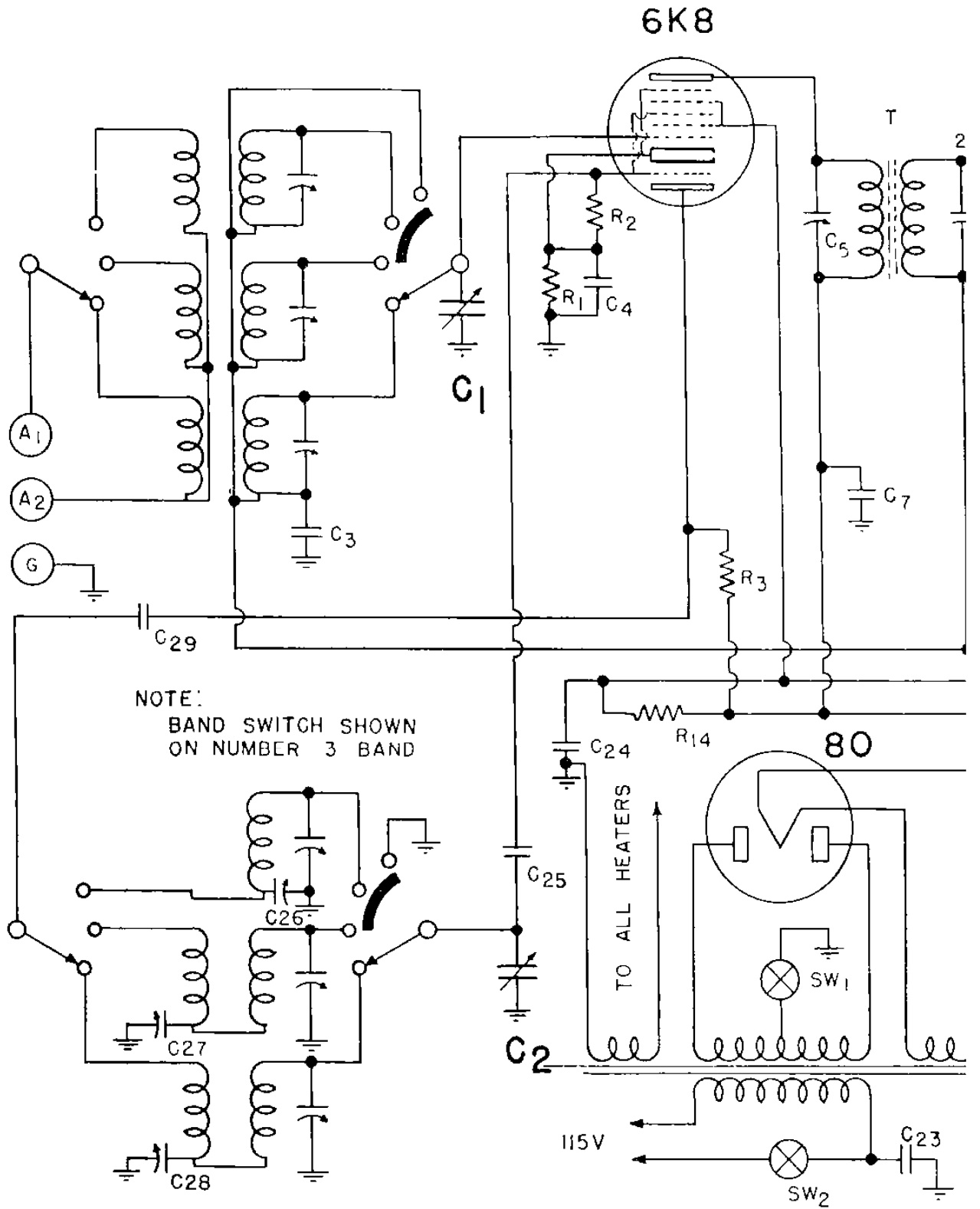
RESISTORS				CONDENSERS				
No.	OHMS	WATTAGE	PARTS NO.	No.	CAPACITY	TYPE	VOLTAGE	PARTS NO.
R1	200	1/3	20-015	C1	400 MFD	MICA	200	40-001
2	50,000	"	20-084	2	"	TUNING	200	41-004
3	15,000	1	20-067	3	.05 MFD	"	200	41-006
4	300	1/3	20-021	4	.1	"	200	41-004
5	3,000	"	20-048	5	TUNING CONDENSER	MOUNTED IN IF CAN	"	"
6	300	"	20-021	6	"	"	"	"
7	250,000	"	20-099	7	.25 MFD	"	400	41-009
8	1,000,000	"	20-198	8	1,500 MFD	WICA	400	40-002
9	500,000	VOLUME CONTROL	20-231	9	.01 MFD	"	400	41-001
10	25,000	"	20-073	10	.05	"	200	41-004
11	250,000	1/3	20-050	11	TUNING CONDENSER	MOUNTED IN IF CAN	"	"
12	500,000	"	20-084	12	"	"	"	"
13	500	1	20-225	13	250 MFD	MICA	200	40-007
14	10,000	1	20-051	14	.1 MFD	"	200	41-006
				15	.02	"	200	41-002
				16	.0005	"	400	41-003
				17	.02	"	400	41-003
				18	.01	"	600	41-002
				19	.01	"	600	45-002
				20	10	"	75	42-021
				21	8	"	450	41-001
				22	8	"	450	41-001
				23	.01	"	400	41-001
				24	.1	"	400	41-001
				25	.0001	"	"	40-007
				26	430 MFD	"	TRIGGER	40-025
				27	1,300	"	"	44-024
				28	2,100	"	"	44-025
				29	.002 MFD	"	"	40-013

SWITCHES

- 1 Sump - Receive SPST
- 2 AC ON - OFF (w/ IF TUN)



SCHEMATIC DIAGRAM - SKY BUDDY



SKY BUDDY — MODEL S-19

